



OAKWOOD
HOMES

Volante

Thompson River Ranch

Elevation A - Building Type 2

2,202 - 2,234 total sq. ft.
2,202 - 2,234 finished sq. ft.

- 3 - 4 bedrooms
- 2.5 - 3.5 baths
- 2 car garage
- + flex space



Elevation B - Building Type 2

Elevation A - Building Type 3



Elevation B - Building Type 3

Elevation A - Building Type 4



Elevation B - Building Type 4

Thompson River Ranch
3617 Valleywood Court
Johnstown, CO 80534

**CARRIAGE
HOUSE**

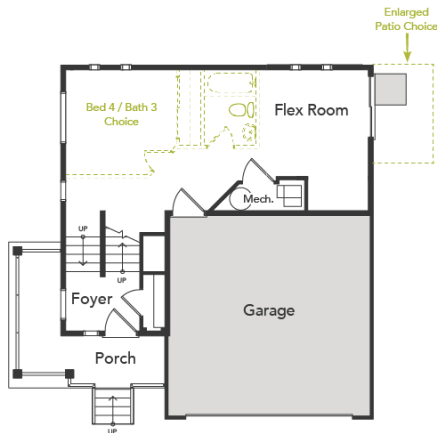
970-347-8345

OakwoodHomesCo.com

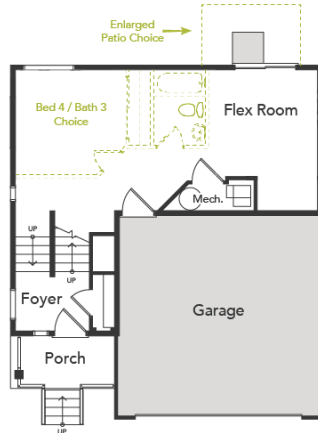


Volante

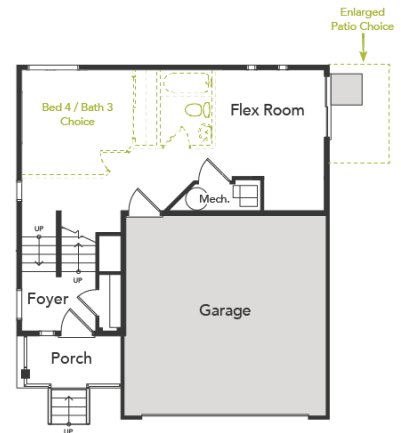
2,202 - 2,234 total sq. ft. | 2,202 - 2,234 finished sq. ft. | 3 - 4 beds | 2.5 - 3.5 baths | 2 car garage



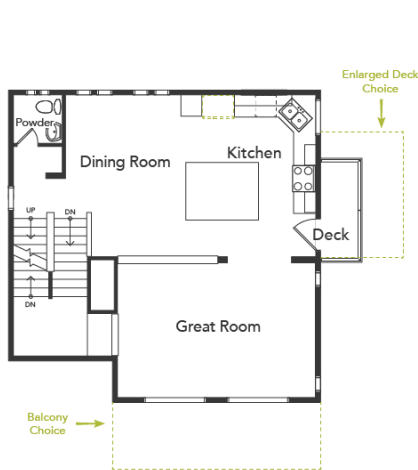
First Floor
Building Type 2



First Floor
Building Type 3



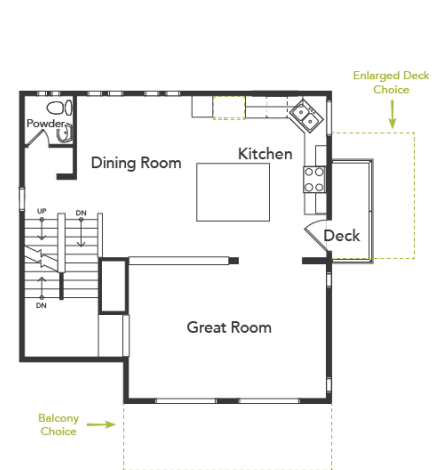
First Floor
Building Type 4



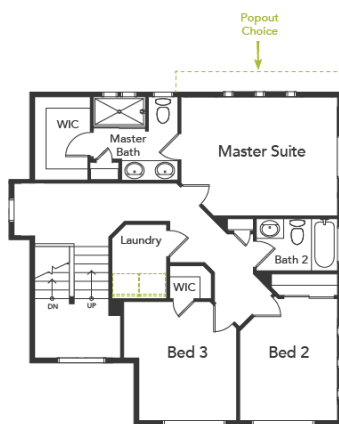
Second Floor
Building Type 2



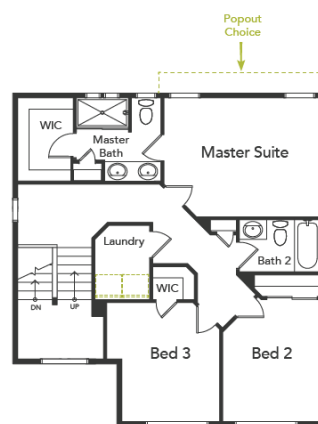
Second Floor
Building Type 3



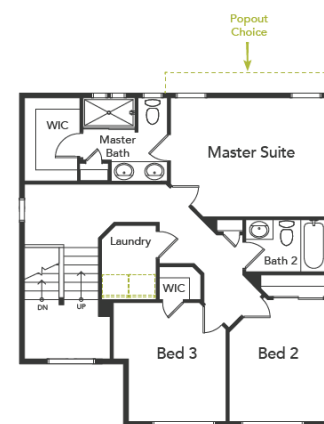
Second Floor
Building Type 4



Third Floor
Building Type 2



Third Floor
Building Type 3



Third Floor
Building Type 4