

# FLOORPLAN

Plan C652



Elevation A with Manufactured Stone Veneer

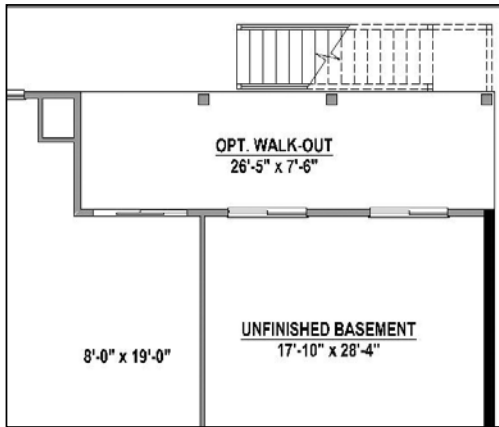


Elevation B with Stone

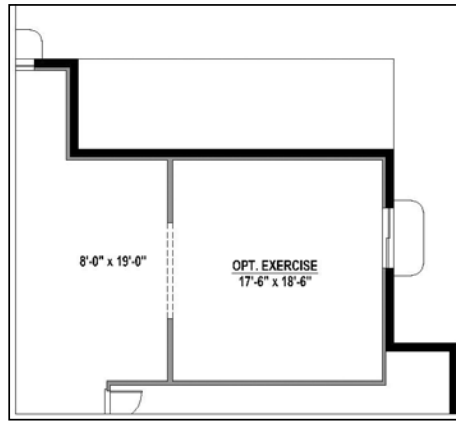


Elevation C with Stone

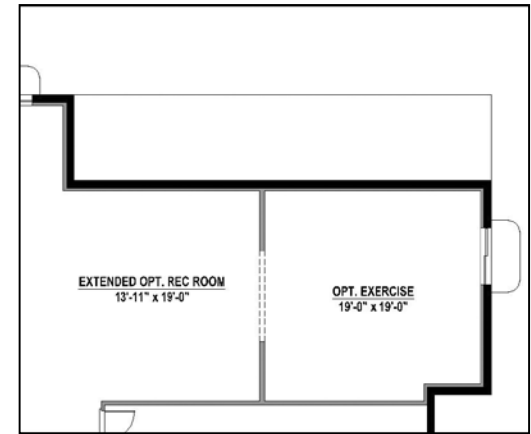




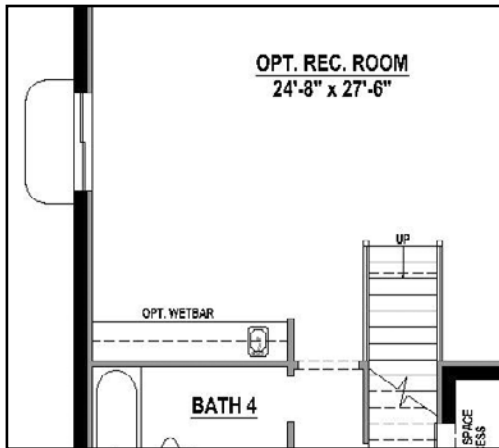
Optional Basement Walkout  
w/ Deck Above



Optional Exercise Room (468 SF)  
*\*also available with walkout and deck above*



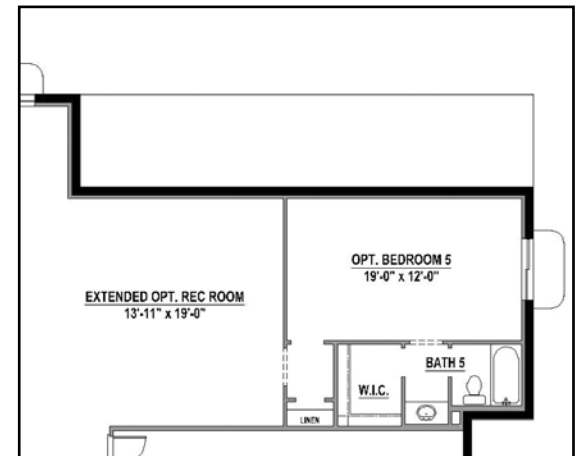
Extended Rec Room and Optional Exercise  
Room w/ Optional Study Above (668 SF)  
*\*also available with extended walkout and deck above*



Optional Wet Bar at Rec Room



Optional Bed 5 w/ Full Bath 5 (468 SF)  
*\*also available with walkout and deck above*



Extended Rec Room and Optional Bed 5w/ Full  
Bath 5 w/ Study Above (668 SF)  
*\*also available with extended walkout and deck above*



Plan C652  
Revision 07/12/2021

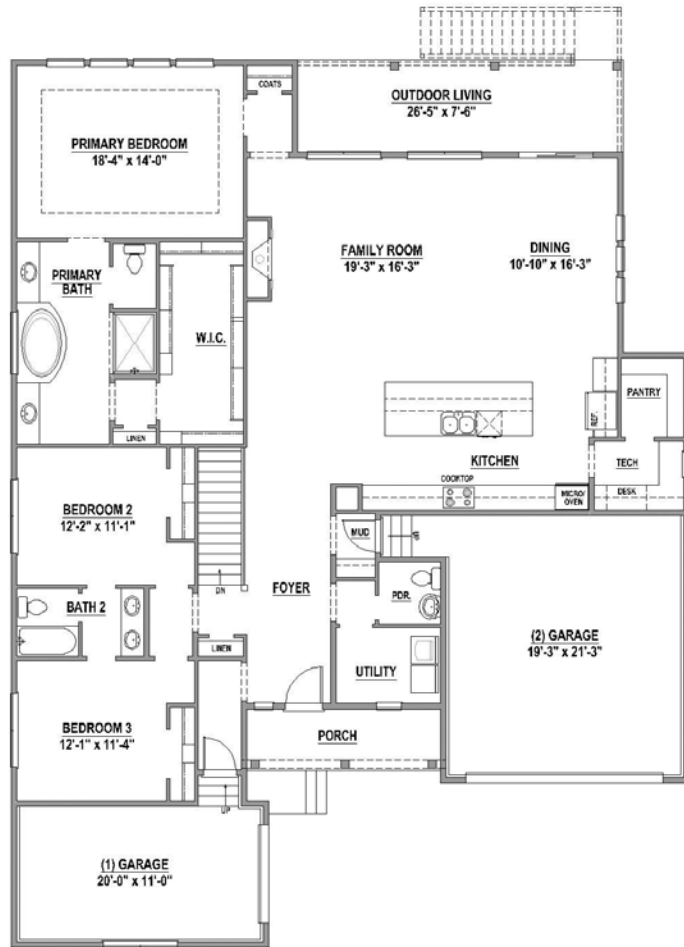
WWW.AMLEGENDHOMES.COM



# PLAN C652

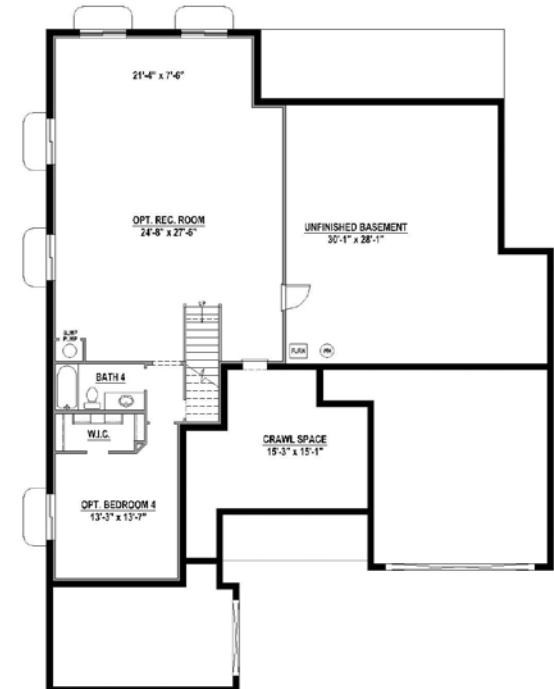
2,333 SF

First Floor



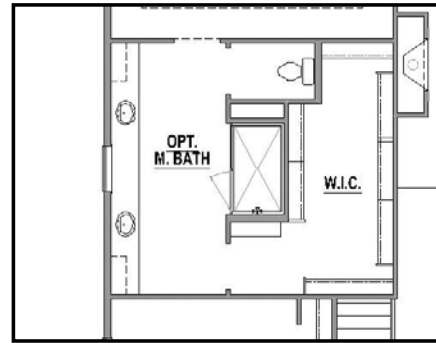
Optional Rec Room w/  
Full Bath 4 (1,068 SF)

Optional Rec Room,  
Bedroom 6 with Bath (1,326 SF)



# Features:

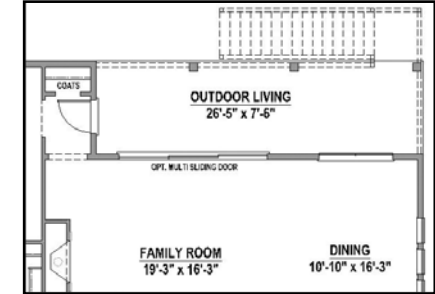
- 1 Story
- 3 Bedrooms
- 2 Full Baths
- 1 Powder Bath
- Tech Center
- 3-Car Split Garage



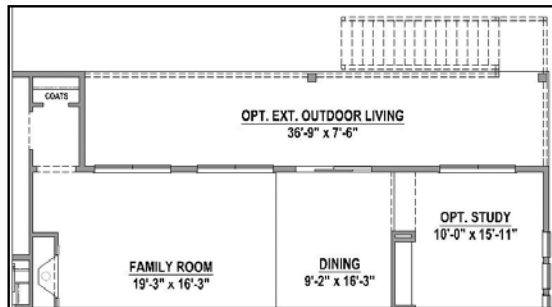
Alternate Primary Bath Layout  
\*also available with W/D closet option



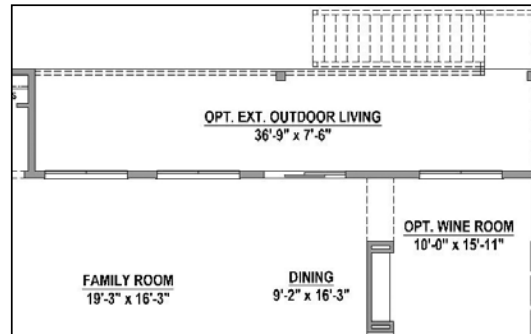
Optional Extended Garage



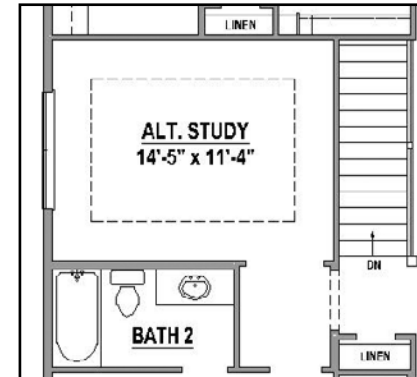
Optional Multi-Sliding Door



Optional Study  
with Extended Outdoor Living (181 SF)



Optional Wine Room  
with Extended Outdoor Living (181 SF)



Optional Alternate Study  
\*in lieu of Bedroom 2



Optional Pass Thru Fireplace at  
Optional Wine Room or Optional  
Study

\*optional french doors also available

Projected HERS Score

**58**

Your home's HERS score is a projected score based on plans. The lower the number, the more energy efficient the home. To learn more, visit [www.hersindex.com](http://www.hersindex.com)

Annual Savings

**\$1,974**

\*Relative to an average U.S. Home

\*This information is presented for education purposes only. The HERS index for a confirmed rating will be determined by a third party HERS rater based on data gathered from on-site observations and, if required, testing of rated features for a home as featured, opinionated, oriented, and/or built.  
+Standard new home is based on the RESNET Reference Home definition with a HERS index of 100 (based on the 2006 International Energy Conservation Code)  
++Typical resale home is based on the U.S. Department of Energy definition with a HERS index of 130.