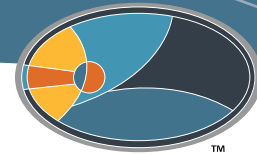


Plan 2201



CRESCENDO AT STEPPING STONE



A : TRADITIONAL

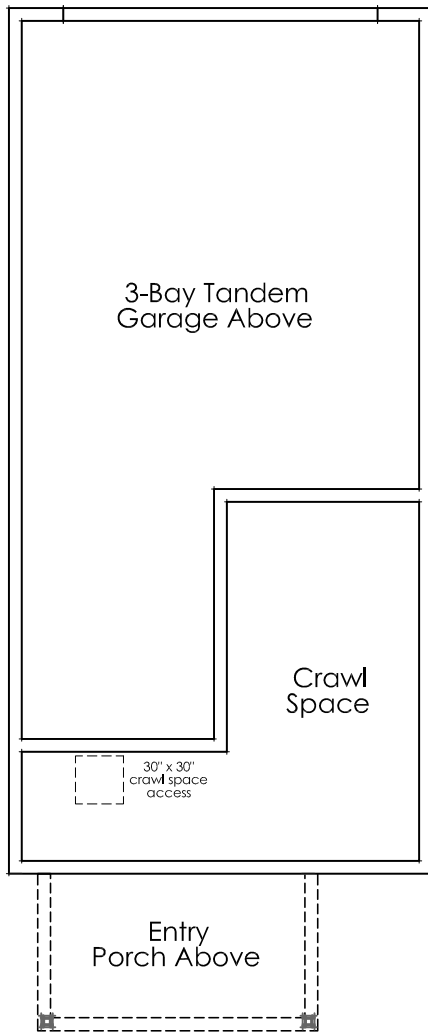


C : CONTEMPORARY

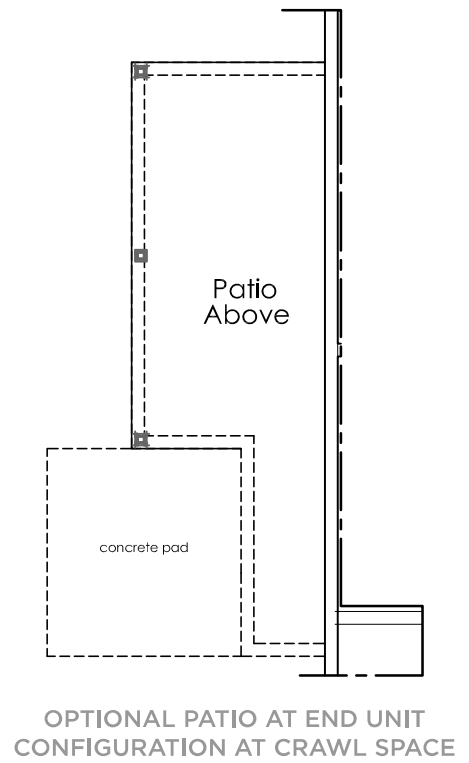
Bedrooms	3
Bathrooms	2.5
First Floor	301 sq. ft.
Second Floor	905 sq. ft.
Third Floor	942 sq. ft.
Total Standard Floor Area	2,148 sq. ft.
Crawl Space	247 sq. ft.
3-Bay Tandem Garage	689 sq. ft.

Shea
HOMES
Live the difference.®

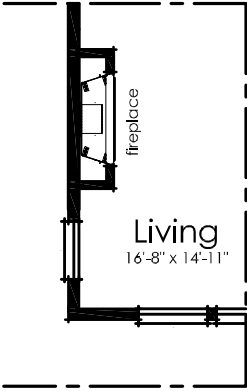
CRAWL SPACE



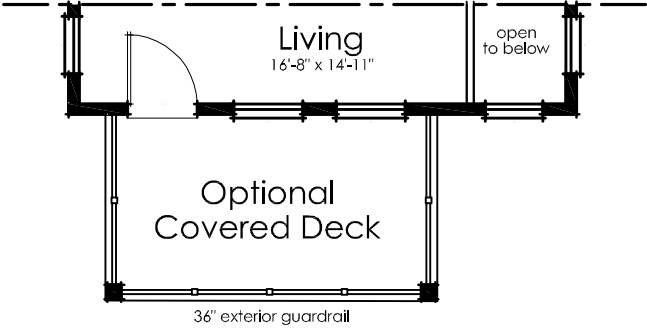
CRAWL SPACE OPTION



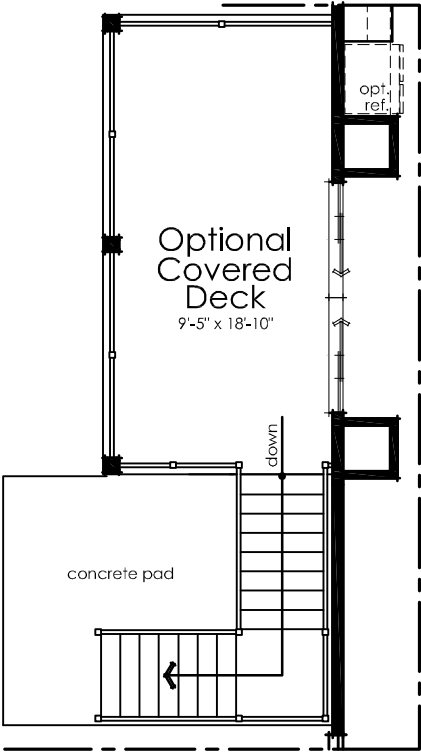
PLAN OPTIONS



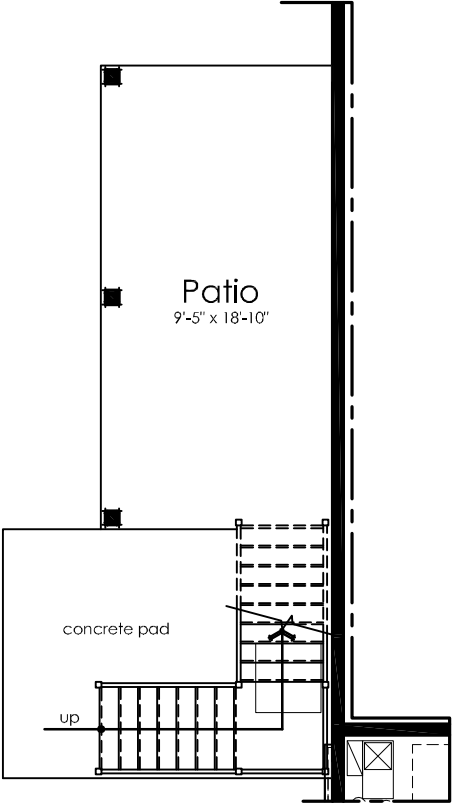
OPTIONAL FIREPLACE AT LIVING ROOM



OPTIONAL COVERED DECK AT SECOND FLOOR

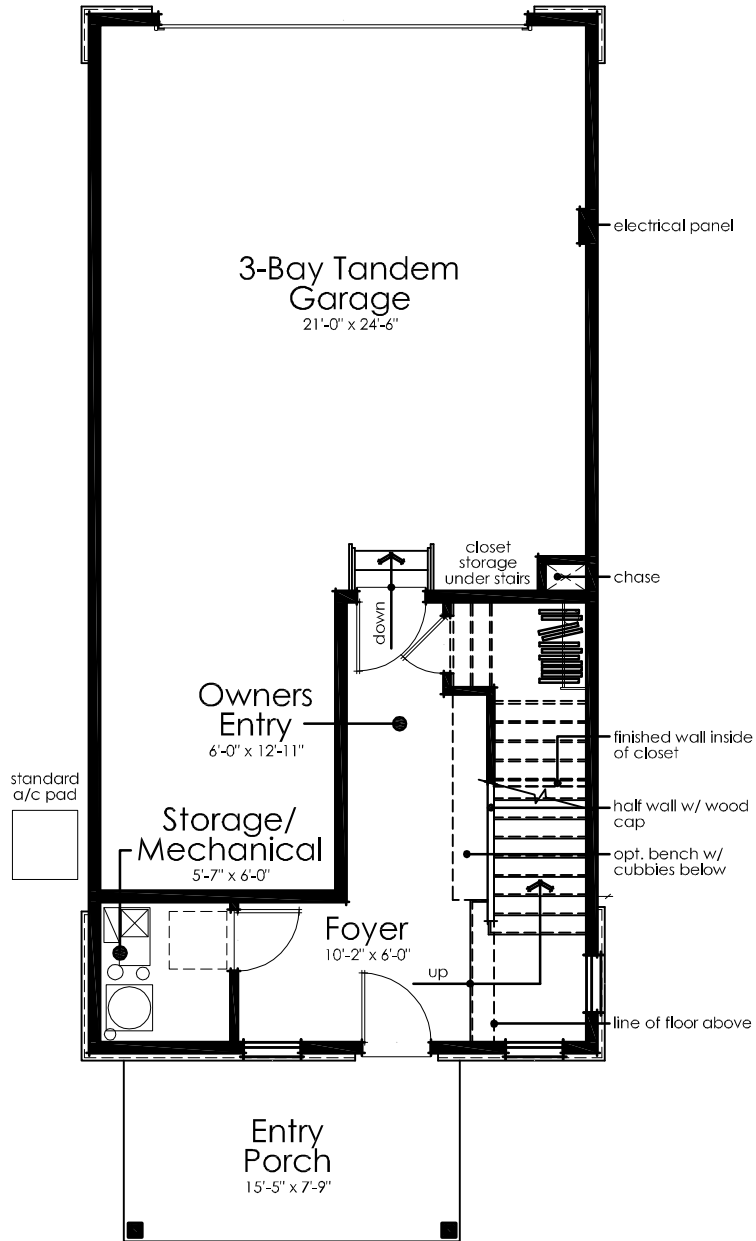


OPTIONAL COVERED DECK AT END UNIT CONFIGURATION AT SECOND FLOOR

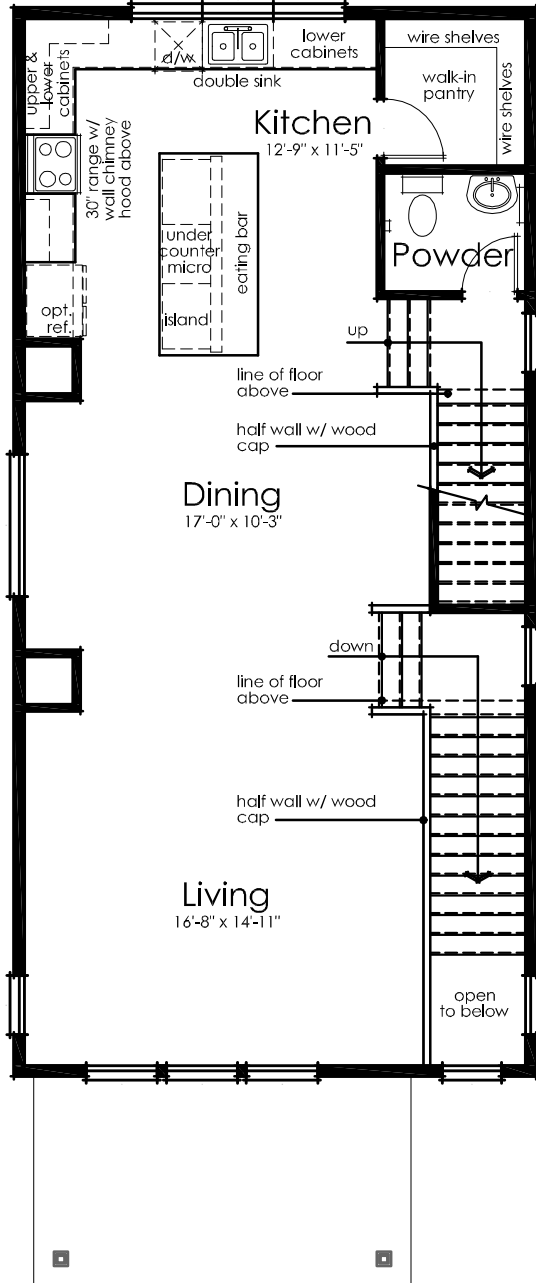


OPTIONAL PATIO AT END UNIT CONFIGURATION AT FIRST FLOOR

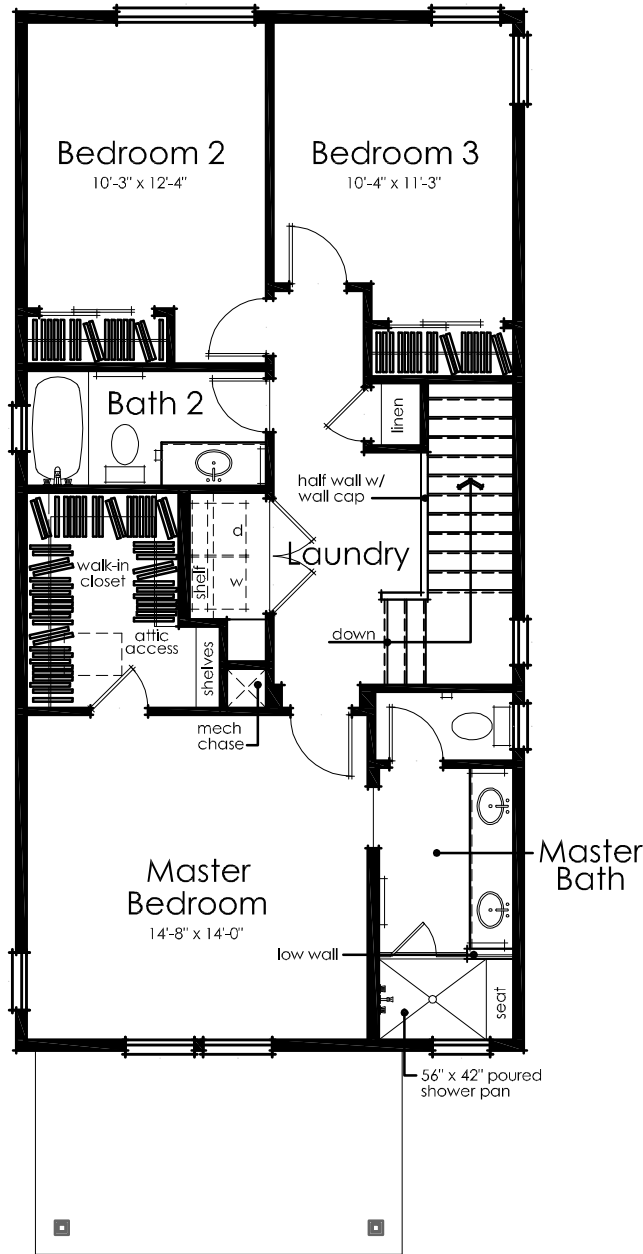
FIRST FLOOR



SECOND FLOOR



THIRD FLOOR



Crescendo at Stepping Stone™ | 866.696.7432 | SheaHomes.com/Crescendo



Pricing does not include options, elevation, or lot premiums, effective date of publication and subject to change without notice. All square footages and measurements are approximate and subject to change without notice. Features and plans subject to change without notice. Windows and doors may vary per elevation. Floor plans, maps and renderings are artist's conception based on preliminary information, not to scale and subject to change. Home pictured may not be actual home for sale or actual model home, but rather a representation of a similar model or elevation design. This is not an offer for real estate for sale, nor solicitation of an offer to buy to residents of any state or province in which registration and other legal requirements have not been fulfilled. Trademarks are property of their respective owners. Equal Housing Opportunity. © 7/2020 Shea Homes