



Prairie-C



Mid-Century Modern-D



Farmhouse-A

## Interlude

Indulge yourself with the modern elegance of the Interlude plan. As you enter, you can feel the openness of the home washed in an abundance of natural light. This stunning plan captures the imagination of well-designed living space that showcases a great room with volume ceiling, gourmet kitchen and casual dining area. This place where you will call home includes these features, plus much more:

- Multiple room options that offer additional bedrooms, a loft and master retreat on the upper level and extra living areas in the finished basement.
- An outdoor living area provides the perfect space for barbecuing and catching up with family and friends.
- A sumptuous Master Suite, complete with a five piece bath and spacious walk-in closet.
- The tandem 3-bay garage that holds your cars and toys for every season.
- A private study on the main level can serve as your in-house office or hobby room.
- A convenient upper level laundry room with easy access to the bedrooms.



www.mcstain.com  
sales@mcstain.com  
303-665-8200





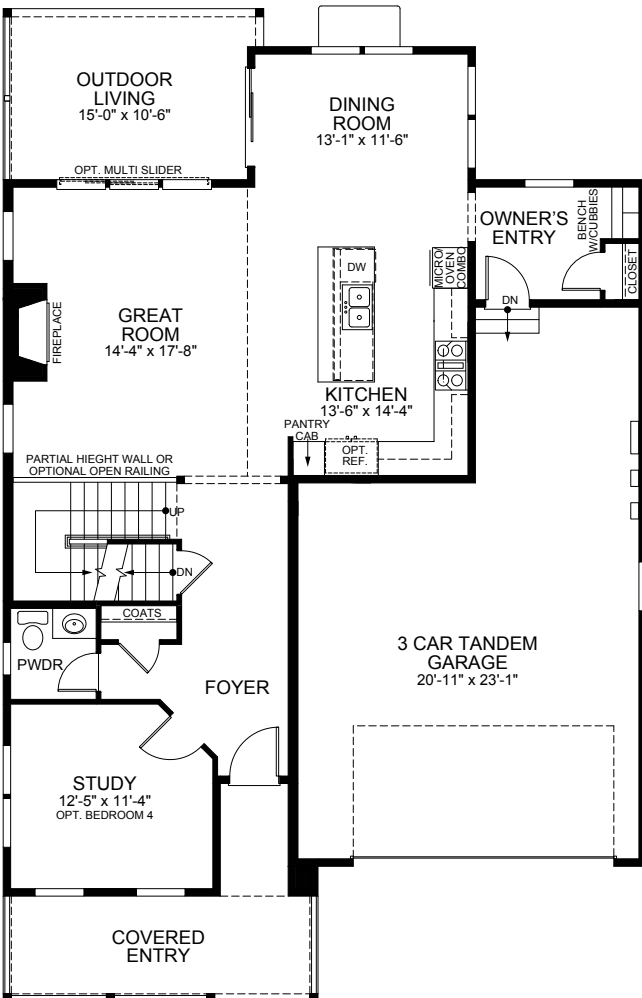
SECOND FLOOR



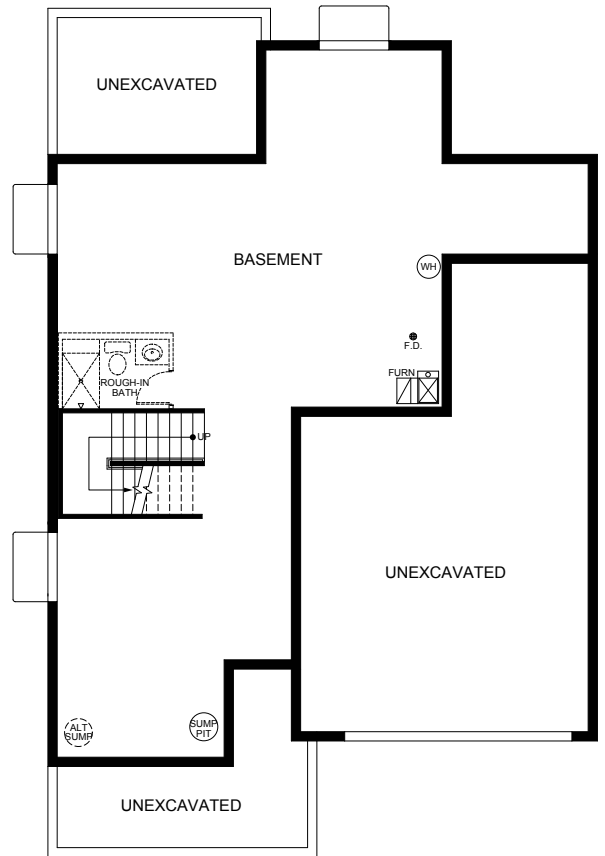
### Interlude (Plan 5020)

Upper Level.....	1,171 sq. ft.
Main Level.....	1,163 sq. ft.
Total Finished .....	2,334 sq. ft.
Loft/Bed 5 / Mstr Ret..	279 sq. ft.
Unfinished Lower Level....	697 sq. ft.
Total.....	3,031 sq. ft.

We reserve the right to modify or change plans, specifications, features and prices without notice. Renderings are artist's concepts. This floor plan depicts elevation A; specifications may vary with the other elevations.



FIRST FLOOR



BASEMENT